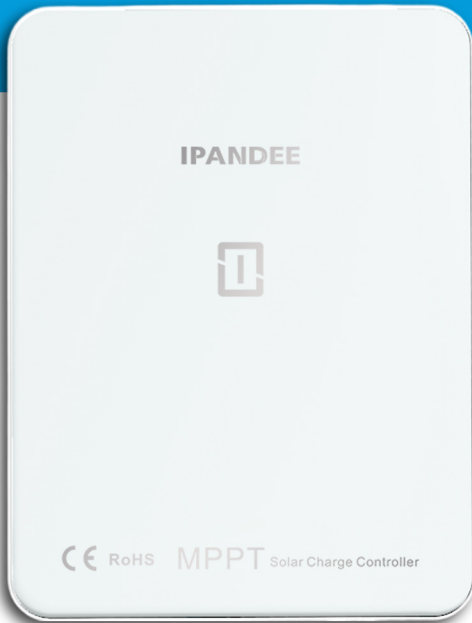


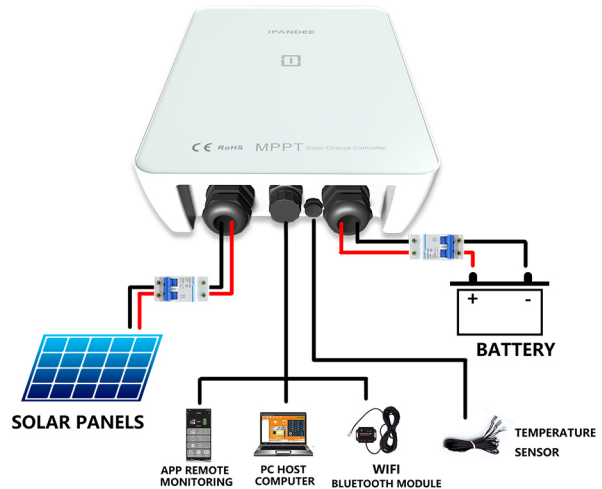
Off-grid power generation system Preferred product



EXPLORER SERIES The solar charge controller incorporates new design concepts, keeps pace with technological development, and adapts to the needs of cutting-edge off-grid system applications. This series of controllers adopts the patented technology of MPPT control algorithm independently developed by our company, which can always maintain the maximum power point tracking efficiency in the high and low power sections. It has the dual functions of charging current limiting and power limiting while obtaining the energy of the solar panel, as well as the protection mechanism of automatic power reduction during high temperature charging, which fully guarantees the system stability of the product when it is connected to excess photovoltaic modules and under high temperature operating environment. In addition, the product innovation breaks through the waterproof and dustproof design, and achieves the protection level of IP65. Adapt to the different charging requirements of lead-acid batteries and lithium batteries, all systems are equipped with the activation function after lithium battery over-discharge protection as standard, fully meet the needs of various system applications of users, and have a variety of perfect protection functions, making the solar power supply system safe, Stable and long-term operation. It can be used in many fields such as RV, base station, household system and outdoor monitoring.

EXPLORER-T

- ✓ The MPPT efficiency is $\geq 99.5\%$, and the conversion efficiency of the whole machine is as high as 98%.
- ✓ Built-in lithium battery activated wake-up function.
- ✓ A variety of battery (including lithium battery) charging can be customized.
- ✓ Support host computer and APP remote monitoring.
- ✓ RS485 bus, unified integrated management and secondary development.
- ✓ Self-cooling & IP65 high protection level.
- ✓ A variety of protection functions, overvoltage and overcurrent, reverse polarity protection, charging protection, etc.

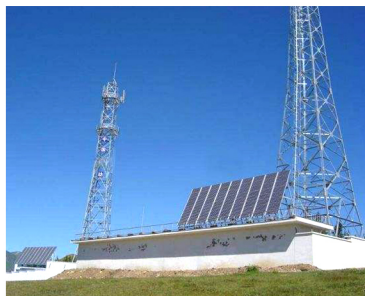


APPLICATION SCENARIOS

Off-grid power generation system



communication base station



RV power supply



Solar monitoring



EXPLORER-T MPPT SOLAR CHARGE CONTROLLER SPECIFICATIONS

Product Category	ET4850	ET4860	
Maximum Power Point Tracking Efficiency	≥99.5%		
Standby power consumption	1.2W~1.8W		
Cooling method	Free cooling		
Lead acid battery system	12V/24V/48V AUTO (12V: 9~15V, 24V: 18~36V, 48V: 42~60V), Can be set to 36V battery system		
Configurable lithium-ion battery system	9VDC~60VDC		
Input parameters			
Maximum input voltage (Voc.Max)	150VDC		
start charging voltage	real-time battery voltage + 3V		
Input low voltage protection voltage	real-time battery voltage + 2v		
Input overvoltage protection voltage/ recovery voltage	150VDC/145VDC		
rated input power	12V lead acid battery system	650W	780W
	24V lead acid battery system	1300W	1560W
	36V lead acid battery system	1950W	2340W
	48V lead acid battery system	2600W	3120W
Charging parameters			
Lithium battery activation function	support		
Battery type (default setting is gel-sealed lead-acid battery)	Sealed lead-acid battery (SEL), colloidal sealed lead-acid battery (GEL), flooded battery (FLD), User-defined (User-defined), Li-ion battery customization (Li-ion)		
Rated maximum charging current	50A	60A	
Temperature compensation	-3mV/°C/2V		
charging method	Lead-acid batteries: CC (Quick Charge) - CV (Constant Voltage Charge) - CF (Float Charge) Li-ion battery: CC (Quick Charge) - CV (Constant Voltage Charge)		
Output Voltage Accuracy	≤±0.2V		
Display & Communication			
show	Status Indicator		
Communication Interface	1-way RJ45 interface / RS485 bus communication / isolated type		
Electrical Interface	5V power supply / rated power 1W		
agreement type	Standard Modbus Protocol / Proprietary Protocol		
Host computer or APP	Support MpptSolarMonitor host computer monitoring (Windows system environment) / Built-in Bluetooth module supports SolaMate mobile APP monitoring		
Support external accessories	USB serial communication cable / Cloud-Box-M2 WIFI module / MH80 remote instrument		
Other parameters			
Internal Electrical Characteristics	common negative polarity		
Protective function	Input and output overvoltage protection / input and output undervoltage protection / reverse polarity protection / overheat protection / battery drop protection, etc.		
Working temperature	-20°C~+50°C		
Storage temperature	-40°C~+80°C		
IP protection class	IP65		
elicit Power cord length	About 400mm		
Installation method	wall-mountedvertical installation		
Appearance feature	Aluminum alloy integrated die-casting cooling shell / heat-resistant tempered glass panel		
Net weight/gross weight (kg)	//		
Product size/packaging size (mm)	290x220x90 / 410x328x193		

Shenzhen Ipandee New Energy Technology Co., Ltd.

Telephone: +86-755-23091101 Mail: info@ipandee.com

URL: www.ipandee.com

address: Floor 2, building A2, LiLang Software Park, No. 31, Bulan Road,
Nanwan street, Longgang District, Shenzhen

